

LONGMONT

1881-2006 **BRICK**



MICHAEL SHERNICK
INTRODUCTION TO BUILDING MATERIALS AND METHODS
ARCH 5310
PROFESSOR ERIC MORRIS
UNIVERSITY OF COLORADO AT DENVER
NOVEMBER 21, 2006

LONGMONT, LIKE MOST COLORADO CITIES, HAS A GREAT VARIETY OF BRICK STRUCTURES, RANGING FROM THE FOUNDING OF THE CITY IN THE LATE 1800S TO THE PRESENT DAY. UNLIKE MANY COLORADO CITIES, THOUGH, LONGMONT HAS A PREVALENCE OF BUILDINGS THAT COMBINE LYONS RED SANDSTONE WITH BRICK DUE TO THE CITY'S PROXIMITY TO THE LYONS QUARRIES.

THIS PAPER LOOKS AT THE USE OF BRICK IN LONGMONT, STARTING WITH ONE OF THE EARLIEST BUILDINGS (ST. STEPHEN'S CHURCH) AND ENDING WITH ONE OF THE MOST RECENT (THE WAL-MART SUPERCENTER), WHILE COVERING A VARIETY OF USES, FROM COMMERCIAL TO RESIDENTIAL.

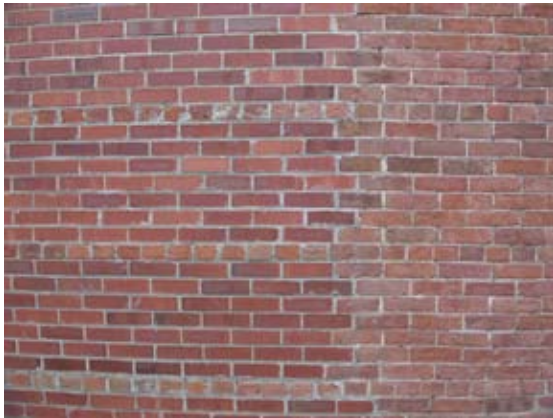
ST. STEPHEN'S CHURCH AND WAL-MART EACH HAVE SIMPLE STRUCTURES WITH RELATIVELY SIMPLE USE OF BRICK. ST. STEPHEN'S IS SIMPLY BUILT DUE TO THE FINANCIAL CONSTRAINTS OF AN EARLY CONGREGATION IN A FRONTIER TOWN. WAL-MART, BY CONTRAST, USES MATERIALS IN AS SIMPLE A MANNER AS POSSIBLE (GIVEN CITY STANDARDS MANDATED TO THE COMPANY) IN ORDER TO MINIMIZE EXPENSES. DEPENDING ON ONE'S VIEW, ONE CAN CONSIDER THESE TWO BUILDINGS AS EITHER THE "RISE AND FALL" OF BRICK USAGE IN LONGMONT OR AS "BOOKENDS" TO A CONTINUUM OF BRICK USAGE IN LONGMONT, WHICH CONTINUES TO EVOLVE.

THE BUILDINGS EXAMINED BETWEEN THESE TWO (THE HANSEN BUILDING, AN HISTORICAL LANDMARK RESIDENCE, AND ROOSEVELT PLACE) ARE ALL FINE EXAMPLES OF THE USE OF BRICK. GIVEN THE EASE WITH WHICH ONE CAN FIND EXAMPLES SUCH AS THESE, THE CONCLUSION TO TAKE AWAY IS THAT BUILDING WITH BRICK IS ALIVE AND WELL IN LONGMONT.

**ST. STEPHEN'S CHURCH
470 MAIN STREET
1881**



THE OLDEST SURVIVING CHURCH IN LONGMONT, ST. STEPHEN'S HAS BEEN THROUGH MULTIPLE RENOVATIONS AND CHANGES, AS EVIDENCED BY THE VARIETY OF BRICK TECHNIQUES USED. EVEN SO, THE BUILDING MAINTAINS ITS CHARACTER.



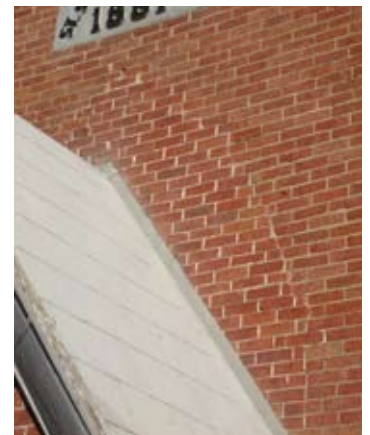
HEADER COURSES FROM THE OLD STRUCTURE WERE CAREFULLY INTEGRATED INTO THE NEWER ADDITION. NOTE THAT THE HEADER COURSES ARE EVERY EIGHTH COURSE INSTEAD OF EVERY SIXTH, AS IS COMMON WITH AMERICAN BOND. THE MORTAR JOINTS ARE CONCAVE.

NOTE THE CORBELLED DETAILS ON THE CORNICE OF THE ADDITION. THIS LEVEL OF DETAIL IS RICHER THAN THE ORIGINAL BUILDING. IT IS LIKELY THE CONGREGATION HAD MORE FINANCIAL RESOURCES AVAILABLE BY THE TIME THE ADDITION WAS BUILT.



GOTHIC ARCHES ARE USED FOR MOST OF THE WINDOWS AND ENTRYWAYS. NOTE THE SEPARATION OF THE BRICK FROM THE STONE NEXT TO THE LAMP FIXTURE AND THE REPAIRED BRICKWORK AROUND THE WINDOW. ALSO NOTE THAT THE SMALLER WINDOWS USE STONE FOR THEIR ARCHES WHEREAS THE LARGE WINDOW IN THE APSE IS A ROUGH BRICK GOTHIC ARCH.

IT APPEARS THAT THE ORIGINAL ENTRYWAY WAS A GOTHIC ARCH, WHICH SUBSEQUENTLY WAS REPLACED WITH A NARTHEX EXTENDING FROM THE MAIN FACADE. NOTE, TOO, THAT ON THE FACADE, THE BRICK IS LAID IN RUNNING BOND INSTEAD OF AMERICAN BOND AS ELSEWHERE IN THE BUILDING.



IN SPEAKING WITH CLAIRE LANIER, THE DIRECTOR OF THE ST. VRAIN HISTORICAL SOCIETY (THE OWNERS OF THE CHURCH), SHE BELIEVES THE BUILDING TO BE WOOD FRAMING WITH A BRICK VENEER EXTERIOR. IF THIS IS THE CASE, THEN THESE BUTTRESSES ARE POSSIBLY MORE ORNAMENTAL THAN STRUCTURAL.

THIS ROUGH ELLIPTICAL ARCH ON THE ADDITION IS OUT OF CHARACTER WITH THE REST OF THE BUILDING.



**HANSEN BUILDING
477 MAIN STREET
1904**



THE HANSEN BUILDING, ORIGINALLY BUILT FOR \$50,000, WAS ORIGINALLY RENOVATED IN 1962, THEN AGAIN IN 1997 BY JIM AND SANDY HANSEN FOR \$950,000. IT IS AN EXCELLENT EXAMPLE OF THE STYLE COMMON IN LONGMONT OF COMBINING LYONS RED SANDSTONE WITH BRICK.



THE COMBINATION OF BRICK AND SANDSTONE CREATES A SUBTLE VARIATION OF COLOR ALONG THE NORTH FACADE.



NOTE THE USE OF RUSTICATED SANDSTONE IN RELATIONSHIP TO THE RED BRICK, WHICH IS LAID IN RUNNING BOND WITH CONCAVE MORTAR JOINTS. THE SANDSTONE HAS ALSO BEEN USED ON FACE FOR LARGE SMOOTH AREAS AND CUT TO SPECIFIC SHAPES FOR THE BALCONIES. ALL OF THE WINDOWS HAVE ROMAN ARCHES.



THE WEST FACADE HAS SIGNIFICANT EFFLORESCENCE PROBLEMS NEAR THE CORNICE. THE EFFLORESCENCE IS MOSTLY PRESENT WITH THE BRICKWORK, BUT SOME OF THE SANDSTONE MORTAR JOINTS ARE ALSO AFFECTED.



DETAILS FROM THE NORTH FACADE INCLUDE BANDS OF SANDSTONE, THREE SOLDIER BRICKS FOR A VENT, AND A SOLDIER COURSE BAND. NOTE, TOO, HOW THE SECOND FLOOR WINDOW IS SET WITH A ROMAN ARCH, WHEREAS THE GARDEN LEVEL WINDOW IS SET WITH A LINTEL.



THE FIRST FLOOR OF THE WEST FACADE USES SOLDIER COURSES. THE VERTICALITY OF THE BRICK VISUALLY OFFSETS THE WEIGHT OF THE HEAVY CURVED BALCONY DIRECTLY OVERHEAD.

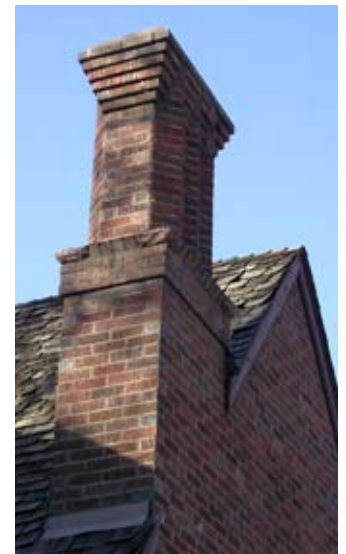
**HISTORIC LANDMARK RESIDENCE
960 5TH AVENUE
1928**



LOCATED IN LONGMONT'S HISTORIC DISTRICT, THIS RESIDENCE IS AN EXCELLENT EXAMPLE OF BRICK DETAILING IN A UNIQUE LOCAL VERNACULAR.



THE FACADE IS LAID IN A VARIANT OF AMERICAN BOND. EVERY SEVENTH COURSE, INSTEAD OF EVERY SIXTH, IS A HEADER COURSE. INTERESTINGLY, THE HEADER COURSES ARE LAID IN FLEMISH BOND. NOTE THE INTEGRATION OF RED SANDSTONE FOR THE KEYSTONE OF THE ROUGH PARABOLIC ARCH. SANDSTONE HAS ALSO BEEN USED AT THE CORNERS OF THE CHIMNEY AND THE GABLES AS A COUNTERPOINT TO THE CORBELLED DETAILS IN THESE AREAS. SOLDIER COURSES ARE USED TO DISTINGUISH BETWEEN FLOORS.



THE HOUSE UNDERWENT A RECENT RENOVATION BY CHARLOTTE GROJEAN AT TERRA VERDE ARCHITECTS IN BOULDER. MANY OF THE ORIGINAL BRICKS WERE USED FOR THE NEW FACADE, BUT THE UNUSUAL COMBINATION OF AMERICAN AND FLEMISH BOND WAS SUBSTITUTED WITH RUNNING BOND.



THE RENOVATION WAS SENSITIVE TO THE DETAILING OF THE ORIGINAL HOUSE: SOLDIER COURSES ARE CONTINUED, AND SANDSTONE DETAILS ARE INCORPORATED AT THE BASE OF THE BAY WINDOW.



THE INTERIOR FIREPLACE USES BRICK FOR THE MANTEL AND RED SANDSTONE FOR THE KEYSTONE IN THE GOTHIC ARCH, ECHOING THE DETAILS ON THE EXTERIOR OF THE HOUSE. THE HOUSE IS BUILT WITH BALLOON FRAMING AND PLASTER AND LATH WALLS.



**ROOSEVELT PLACE
636 COFFMAN STREET
2002**



BUILT ON SPECULATION, ROOSEVELT PLACE IS INTENDED AS A CLASS A OFFICE/RETAIL BUILDING. IT GAINS SOME OF ITS HIGH END APPEAL FROM THE BRICKWORK, WHICH IS MORE CAREFULLY DONE THAN IN MANY CONTEMPORARY BUILDINGS.

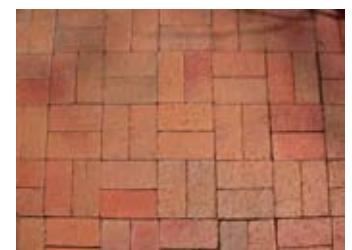
NOTE THE SLIGHTLY TAPERED BRICK COLUMNS, WHICH GIVE THE ENTRANCE A MORE GRACEFUL APPEARANCE. THE BUILDING IS MADE OF STRUCTURAL STEEL, SO THESE COLUMNS ARE PURELY FOR DECORATION.



THE LINTELS (AS WELL AS MOST OTHER NON-BRICK DETAILS) ARE CAST CONCRETE. NOTE THE EXPANSION JOINTS BEING USED AS A DESIGN ELEMENT TO FRAME THE WINDOW.

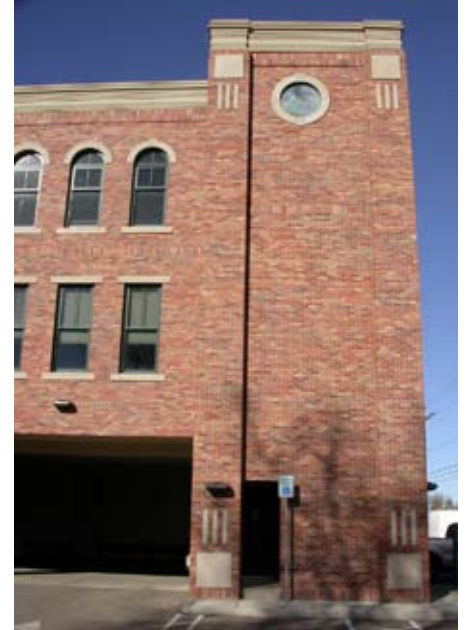


DETAILS INCLUDE SOLDIER COURSES AS WALL HEADERS WITH A ROWLOCK, ENDENTATED CORNERS WITH BRICK AND CONCRETE PILLARS, AND SANDED BRICK PAVEMENT IN THE SIDEWALK. NOTE THE EFFLORESCENCE BELOW THE METAL FENCE.





STYLES ARE MIXED: ROMAN ARCHES, GREEK TRIGLYPHS, AND A ROUND WINDOW REMINISCENT OF THE OCULUS IN THE PARTHENON. HOWEVER, SLIGHTLY CORBELLED SOLDIER COURSES AND CAREFUL USE OF EXPANSION JOINTS TO FRAME WINDOWS ADDS NEEDED DETAIL TO THE OTHERWISE PLAIN RUNNING BOND USED THROUGHOUT THE FACADE.



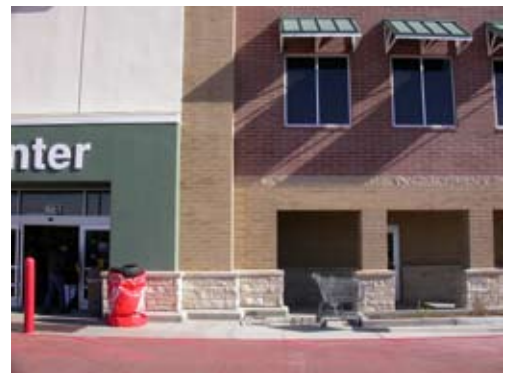
THE TRIGLYPHS ARE CONTINUED TO THE GROUND LEVEL. EVEN THOUGH THE BRICK IS NON-STRUCTURAL, THE USE OF A SOLDIER COURSE AT THE BASE GIVES THE IMPRESSION THAT THE FOUNDATION IS BRICK. INTEGRATION OF BRICK IN THE SIDEWALK TIES THIS BUILDING TO THE REST OF DOWNTOWN LONGMONT, WHERE THIS MOTIF IS REPEATED.



**WAL-MART SUPERCENTER
2514 MAIN STREET
2005**



BUILT AFTER MUCH CONTROVERSY, THIS WAL-MART HAS COMPLIED WITH CITY OF LONGMONT DEVELOPMENT STANDARDS FOR MASONRY IN COMMERCIAL DEVELOPMENTS.



DETAILING IS LIMITED TO BANDS OF CMU AND RED AND BLOND BRICK JUXTAPOSED TO DEFINE FALSE WINDOWS. EXPANSION JOINTS ARE PLACED ONLY AS NECESSARY AND NOT USED AS A DESIGN ELEMENT. DETAILING IS KEPT TO A BARE MINIMUM, YET ATTEMPTS TO LEND AN AIR OF SOPHISTICATION TO THE BUILDING WHILE APPEARING TO BE OF THE LOCAL VERNACULAR AS WELL.

THE BUILDING IS STRUCTURAL STEEL, FILLED IN WITH CMU. THE FACADE IS A COMBINATION OF QUEEN SIZE BRICKS IN RED AND BLOND, SPLIT BLOCK CMU, STONE VENEER, AND EXTERIOR INSULATION AND FINISH SYSTEM (EIFS), ALL TIED TO THE STRUCTURAL CMU.



INTERNAL VIEWS SHOW THE STRUCTURAL CMU USED IN CONJUNCTION WITH THE STEEL STRUCTURE.

SOURCES

GENERAL PROPERTY INFORMATION FROM THE BOULDER COUNTY TAX ASSESSOR:
[HTTP://WWW.CO.BOULDER.CO.US/ASSESSOR/](http://www.co.boulder.co.us/assessor/)

ST. STEPHEN'S CHURCH:
ST. VRAIN HISTORICAL SOCIETY BROCHURE
CONVERSATION WITH CLAIRE LANIER, DIRECTOR, ST. VRAIN HISTORICAL SOCIETY

HANSEN BUILDING:
[HTTP://WWW.AMCH.COM/BUILDING.HTM](http://www.amch.com/building.htm)

HISTORIC LANDMARK RESIDENCE:
CONVERSATION WITH LORI WEST, OWNER, WHO GRACIOUSLY INVITED ME INTO HER HOUSE.
BEFORE AND AFTER RENOVATION IMAGE IS FROM:
[HTTP://WWW.TERRAVERDEARCH.COM/INDEX2.HTML](http://www.terraverdearch.com/index2.html)

ROOSEVELT PLACE:
RENDERING IMAGE IS FROM:
[HTTP://WWW.DOLO.ORG/FOR_LEASE/INDEX.HTM](http://www.dolo.org/for_lease/index.htm)

WAL-MART SUPERCENTER:
[HTTP://WWW.CI.LONGMONT.CO.US/PLANNING/DEV_CODE/DOCUMENTS/15_05_091206.PDF](http://www.ci.longmont.co.us/planning/dev_code/documents/15_05_091206.pdf)

